



HENRI MATISSE

## SASA COUNCIL

President:	Irene Oxley
Vice President:	Ingrid Wallach
Treasurer:	Mike Forrester
Secretary:	Louise van Wyk
Catering:	Avril Retief
Website & Audio:	Leon Steenburg
Social Photographs:	Sandy Rogerson

## □ From the President

Hello my fellow artists,

What an interesting meeting we had on Thursday 27<sup>th</sup> June. The proposed changes to the Constitution chaired by Fellow Solly Gutman has once again recognised all our Fellows back into the SASA roll of honour.

Also AJ Burns who gave us a talk after the vote, on his process with Acrylics and insights into Art sales world-wide was inundated with questions, more about that later.

### Winter Workshops, we are having a revamp!

The Workshops are held at the Peter Clark Art Centre, Newlands on a Saturday morning 9am to 3pm, usually all in the month of July, this can work out quite costly at R450 each. After chatting to our Fellows we have decided to make them monthly, starting 17<sup>th</sup> August with a journaling & sketchbook session with Fellow Sonja Frenz. We have also approached Deckle Edge if they will display the equipment you would need to start your journey, at a special price. Bookings are essential as there is limited space, ± 15 attendees. Mark the date in your diary. You will be emailed with more info in due course.

July sees the **Life, Land/Seascape and Still Life** competition being held on Thursday 25<sup>th</sup>. Because we have so many new members this year, which we are very happy to announce, the council debated at length about our competitions and how we could make the 'Newbies' feel more comfortable entering, as a few new members expressed their reticence to

enter as the standard is always so high. To that end we have a new category, for those members who have been with us for 3 years or less, we will keep the same themes and rules except it is The Newbies' interpretation of their chosen theme.

August 3<sup>rd</sup> & 4<sup>th</sup>, the **Selection Weekend**. Have you started painting your 3 entries? I have secured our 3 judges so we are green for go. More on how and why you should enter later in this Newsletter.

### Why I got into Art

I got into painting seriously because of the Impressionists, Monet was my hero. I did not know Camille Pissarro, yes I knew the name but not that in 1873 he helped to establish the collective society, he was known as the "dean of the

Impressionist painters" Cezanne likened him to a father figure, a master to Gauguin, through his artistic portrayals of the everyday events, Renoir called his work revolutionary.

You learn something new every day...  
I love art.

Irene  
President



**Thank you to our Patrons: Sam Nhlengethwa, Conrad Theys and Hayden Proud**

**President:** Irene Oxley [president@sasa-artists.co.za](mailto:president@sasa-artists.co.za)

**Secretary:** Louise van Wyk 071 496 1029 [secretary@sasa-artists.co.za](mailto:secretary@sasa-artists.co.za)

**Treasurer:** Mike Forrester 021 761 6357 [treasurer@sasa-artists.co.za](mailto:treasurer@sasa-artists.co.za)

**ONLINE:** <http://www.sasa-artists.co.za> | [www.facebook.com/SASArtists](https://www.facebook.com/SASArtists) | [www.instagram.com/sasa.artists](https://www.instagram.com/sasa.artists)

<http://sasartists.blogspot.com>

**POSTAL:** PO Box 2574, Clareinch, 7740

**DIARY**

<b>JULY</b>	<b>Thursday</b>	25	Monthly Meeting. Life, Land/Seascape and Still Life Competition. New Members Category (Less than 3 years membership) Details below.
<b>AUGUST</b>	<b>Saturday</b>	3	Selection Weekend - Delivery of work 09h00-13h00 – Rustenburg Girls High School
<b>AUGUST</b>	<b>Sunday</b>	4	Selection Weekend - Judging and collection of work at approximately 17h30 (no earlier).

**NEW MEMBERS CATEGORY**

Every year SASA has its Life, Land/Seascape and Still Life Competition at the end of July. Here all members have the opportunity to enter artworks within these categories to be judged by their peers.

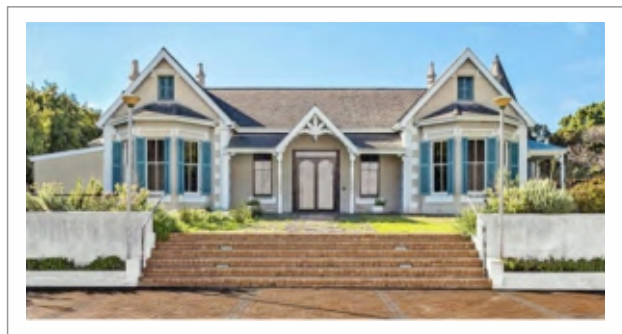
We invite all new members to submit works fitting within the subject of the competition into this category. Simply bring the artwork/s you would like to enter to the Monthly Members Meeting on 25<sup>th</sup> July. We look forward to seeing you there.



*Nasturtiums and Madagascar memories - Beth Lowe*

**MONTHLY MEETINGS**

SASA Monthly Meetings are held at the Athenaeum, Newlands, on the last Thursday of every month at 19:00. Entry is R10 for members and R20 for guests, which includes refreshments. We encourage you to attend and find out what’s going on in your society and also connect with your fellow artists. There is always a regular informative demonstration, talk or competition scheduled for the evening.



Please continue to share news or images taken at any SASA event with us, so that we can make these available to all our members. For Instagram you can contact Sandy Rogerson (083 462 8103). For Facebook please contact Libby Harrison at [art@libbyharrison.co.za](mailto:art@libbyharrison.co.za) or Audrey Innes at [audsinnes@hotmail.com](mailto:audsinnes@hotmail.com)

**THE DECKLE EDGE**

**Art Society Members  
Save 10% on Art Supplies**

Over 20 000 Fine Art Materials To Choose From

**[www.deckleedge.co.za](http://www.deckleedge.co.za)**

Email: [hello@deckleedge.co.za](mailto:hello@deckleedge.co.za) Call: 021 201 4100



## □ NEW MEMBERS

A warm welcome to our new SASA Members and we hope to meet you all very soon.

Tanya Rudman	Cape Town
Aretha Prinsloo	Cape Town
Barry Leitch	Cape Town
Lori Leitch	Cape Town
Gabriele Blumberg Tobergte	Cape Town
Cheryl Hilman	Cape Town



## □ 2024 COUNCIL

The current council members are reflected on page 1.

We are always looking for additional members to assist, so please don't hesitate to apply.

Libby Harrison continues to handle the Social Media portfolio on our behalf.

## □ CALL FOR BOARD MEMBERS FOR THE ATHENAEUM

In the last few months the Board of the Athenaeum has been drastically depleted. The Athenaeum is no longer operating efficiently. Its expenditure exceeds its income. Those still on the Board lack the skills or time needed to run it effectively.

The Athenaeum urgently needs new members to serve on the Board and get involved actively in managing the trust. Anyone who values the aims of the Athenaeum Trust can be considered.

The Board roles are:

- President
- Treasurer
- Bookings Administrator
- Marketing Manager
- Maintenance Manager
- Garden Manager
- Up to four extra Board Members to support those above and help with ad hoc duties.

Individually, each role would probably only need an hour or two each week.

Please contact Glenda Thorpe ([info@capehorticulturalsociety.co.za](mailto:info@capehorticulturalsociety.co.za)) if you or someone you know is willing to help or should you have any questions.

*(summary of a mail circulated by Glenda Thorpe)*





**Brushy and Canvas**  
Your arts and crafts store

**Art supplies | Graphic materials | Paper and board**

Belvedere Square, Claremont | Corner of Belvedere and Keurboom Roads  
Tel: 021 674-30022 | [www.brushandcanvas.co.za](http://www.brushandcanvas.co.za) | Email: [brushandcanvas@ibox.co.za](mailto:brushandcanvas@ibox.co.za)



**the Art Shop**

**Art supplies | Graphic materials | Paper and board**

The Art Shop | 13 Mitchell Street, Hermanus, 7200 | Tel: 028 312-3901  
[www.brushandcanvas.co.za](http://www.brushandcanvas.co.za) | Email: [artshophermanus@telkomsa.net](mailto:artshophermanus@telkomsa.net)

▣ MONTHLY MEETING FEEDBACK - BLOWN AWAY BY AJ BURNS

During the COVID-19 lockdown, AJ attended an art class 35 years after he'd laid down his brushes, and found himself "playing with acrylics" in a neighbour's garage.

This was the beginning of AJ's journey of discovery into how wet paint moves when blown, which led to an award-winning full-time art career, with artworks represented in selected galleries in South Africa and the UK. AJ has reached R1 million in sales by 2023 and has sold more than 100 pieces.

AJ is still literally breathing his life into his large expressionist works, creating mesmerising paintings full of subtle movement with a sense of calm and tranquillity, but this technique is not without its own unique challenges.

Due to working flat as opposed to upright, AJ only works up to a certain size, as he has to bend over the artwork and blow onto the wet paint.

Although he has his paint mixed to his specifications and covers his canvas with up to 6mm of wet paint, he only has a limited period of time to blow and move the paint before it starts filming over and he cannot continue. After that he has to trust gravity and the drying process to do the rest.



AJ also encounters the wildlife challenge that artists everywhere know so well; little beasties landing in wet paint and then adding their own creative touches in an effort to escape.



AJ shared some interesting statistics regarding the capacity of art sales, which emphasises the competitive nature of this market.

Bearing this in mind, how does one go about creating a sustainable art career? AJ shared a few tips:

**SALES CHANNELS**

**Direct:**

- Online
- Own Gallery

**Indirect:**

- Through Galleries
- Via Interior Decorators

**KEY ELEMENTS**

- Unique work - find your niche.
- Brand recognition - make sure that you and your work can be recognised at a glance
- Build a good relationships with galleries that show your work
- Consider the length of time it takes you to finish a work of art.
- Pricing - not too expensive, but also not too cheap Consider your target market
- **BE BRAVE!**





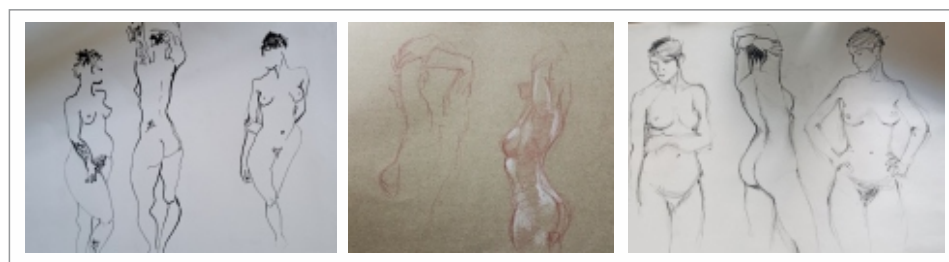
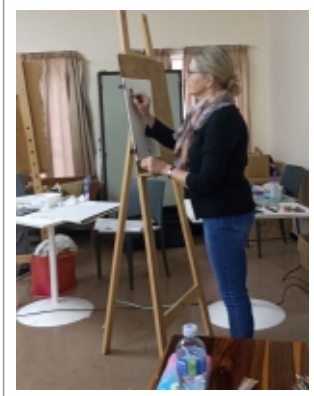
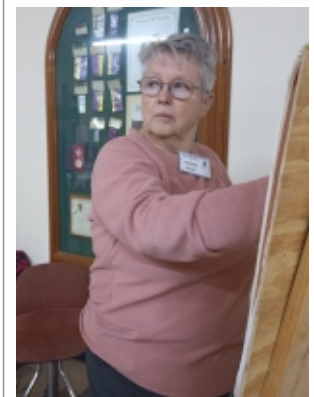
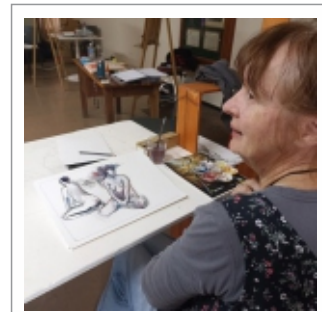
**□ SASA LIFE DRAWING STUDIO - FEEDBACK**

We had the fourth of this season's life drawing sessions on 29 June. The fabulous Kitty was our model for the morning - by the way, she still has some Ryno Swarts sketches to sell if anyone is interested.

We started off with very quick one minute poses, which really got our heads and hands into gear and built up to longer poses at the end. Such a lovely way to spend a winter's morning, totally present and focused ... almost like meditation, with the bonus of having created something beautiful by the end of it.

Thanks to all the members who joined us and especially Audrey and Avril for all your hard work. You are appreciated.

*Libby Harrison*



**□ LIBRARY**

Our Library is open at every Thursday monthly meeting from 17:50 to 18:50. Your membership entitles you to take out two items per month. There are some lovely, helpful and informative publications to browse through.

Members with outstanding library books or other items, especially those more than two months' overdue; please make every effort to return them. **FINES:** As we have numerous DVDs missing, we have increased the Fines as follows:- Bringing back an empty DVD case - R50 on the spot. Not renewing (limited to one month only) R50. And thereafter R50 for each month it is not returned.

If you have any queries regarding any aspect of the library, please contact: Levona at [levonavd@gmail.com](mailto:levonavd@gmail.com)

## SELECTION WEEKEND 2024 - 3<sup>rd</sup> & 4<sup>th</sup> AUGUST

To be able to exhibit at the Annual Exhibition members need to go through a selection process. This Selection Weekend usually occurs during the first weekend in August (this year on 3<sup>rd</sup> and 4<sup>th</sup> August at Rustenburg Girls' High School in Rondebosch) where independent judges score the artwork.

The number of artworks finally accepted are, of course, based on the judges scores AND the number of works that can be accommodated at Kirstenbosch over the exhibition period. The judges also award winning artworks by Medium category as well as certificates of commendation for those works they deem exceptional.

The Annual Exhibition is usually held in November every year, and at the opening all the judges 'winners' are awarded with their certificates and trophies.



### FELLOWSHIP

To qualify for Fellowship of the society, it is necessary to take part in Selection Weekend with a minimum of three paintings. The total scores from submitted works goes towards calculating a minimum score of 75% in a three out of four year period. Members are entitled to submit three works for selection for the Annual Exhibition. This pre-selection shall be done by three experts in art who are not members of the Society. It is proposed that these three judges will each be asked to give a score ranging from 1 to 10 for each work of art (10 marks for excellent). Each work submitted by a member will therefore gain a total score ranging from 3 to 30 and the total score for all three works submitted in one particular year by one member will range from 9 to 90 points. The member's effective score will be the total score from the best three years in any group of four consecutive years.

If the member equals or exceeds an effective score of 203 out of 270 marks (75%) in three out of a four year period then the member will become a Fellow of the Society.

Once a member has acquired Fellowship, a higher grade, known as Senior Fellow, may be achieved using the same scoring system procedure over a further three out of four year period. Once Senior Fellowship has been reached, the highest grade, that of Master Fellow, may be achieved over a further three out of four year period.



## OUR VERY OWN IRMA STERN

Sotheby's – one of the world's premier destinations for art and luxury – announced that three Stern paintings would be sold at one of its upcoming auctions. One will possibly sell for over R4 million.

Sotheby's Modern Day Auction features 102 artworks, including pieces from Picasso, Degas and Renoir.



*Still Life with Watermelons* is estimated at £140,000 – £180,000 (R3.17 million – R4.07 million)



*Nude* is estimated at £1,500 – £2,000 (R33,950 – R45,267)

During the 1950s and 1960s, her works entered the major South African public collections. Today, she is considered one of South Africa's most important artists. Her former Cape Town residence is now the Irma Stern Museum, a treasure trove of her works and a testament to her enduring legacy.

"It speaks to the inherent strength and quality of the South African art scene," he said. "If you put up high-quality work, there is still strong demand in South Africa and internationally."

She was born in 1894 to German Jewish parents at Schweizer-Reneke, a small town in the North West Province of South Africa.

Portion credited to *Bianke Neethling* • 23 June 2024



*Seated Figures, Madeira* is estimated at £4,000 – £6,000 (R90,534 – R135,801)

In March 2011 a new South African record was set when a Stern painting sold for R34 million at Bonhams, London. Last year, Stern broke another record when her painting, *Children Reading the Koran*, sold for R22.3 million and became the most expensive artwork sold at an African auction hosted by Strauss & Co.

Her artistic style, characterised by intense colours and a focus on emotions, resonated deeply with Stern and became the foundation of her artistic approach. Her first solo exhibition in Berlin in 1919 showcased her newly developed style. Upon returning to South Africa in 1920, Stern's expressive style clashed with the local conservative art scene.

Her portraits often depict black people in a style reflecting dignity and individuality, which challenged the status quo in South Africa. This saw Stern face intense criticism and even police investigations. It was only in her late forties that Stern's reputation was firmly established in South Africa.

**Winsen's Canvases**  
*Since 1986*

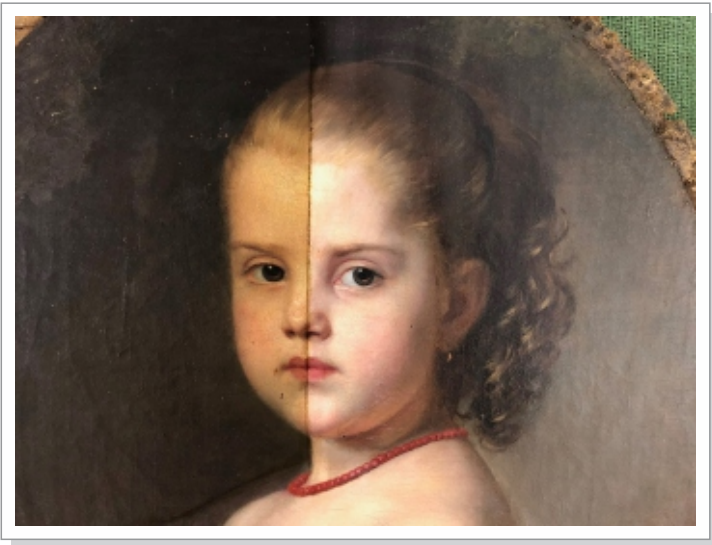
CUSTOM MADE ARTIST'S CANVASES  
& ORIGINAL ARTWORK STRETCHING

- ▶ Stretched Natural Cotton Duck and Polyester Cloth Canvases, including a wide range of Imported Belgian Linen qualities
- ▶ Personalised surface preparation
- ▶ Loose canvas rolls as primed or un-primed
- ▶ Artist's boards of various thicknesses and preparation types
- ▶ Heat-treated Obeche stretcher frames
- ▶ Custom design for unusual-shaped canvases or support structures
- ▶ Hand-made gilded frames

FREE country-wide delivery

☎ 011 315 0565
🌐 [www.winsens.co.za](http://www.winsens.co.za)

**YOUTUBE VIEWS**



Julian Baumgartner of Baumgartner Fine Art Restoration, a second generation studio and now the oldest in Chicago employs only the finest archival and reversible materials and techniques to conserve and restore artworks for future generations.

Follow along as Julian opens a window into the world of painting conservation, sharing methods, theory and the delicate work of art conservation.

<https://www.youtube.com/@BaumgartnerRestoration>

For additional content visit our Patreon at [www.Patreon.com/BaumgartnerRestoration](http://www.Patreon.com/BaumgartnerRestoration)

**MEMBER DISCOUNTS**

Your 2024 membership card will allow you to claim a **15% discount** from **ACF Bespoke Canvases**.

A **10% discount** is available from:

- Deckle Edge in Woodstock,
- ETH Canvases in Woodstock,
- The Italian Artshop in Rondebosch,
- Brush and Canvas in Claremont,
- Truly Fantastic in Muizenberg,
- The Art Shop in Hermanus,
- Artland in Claremont,
- Gecko Art Online,
- The W'rite Shoppe in Longbeach & SunValley Malls and Reddam Centre
- Oxford Framing & Art Supplies in Gardens Centre and West Coast Mall.

Present your SASA Membership Card and receive a 10% discount on all art supplies purchased at The Write Shoppe.

Your art supply store at  
**LONGBEACH MALL**  
**SUN VALLEY MALL**  
**REDDAM**  
 All branches: 021-7857614

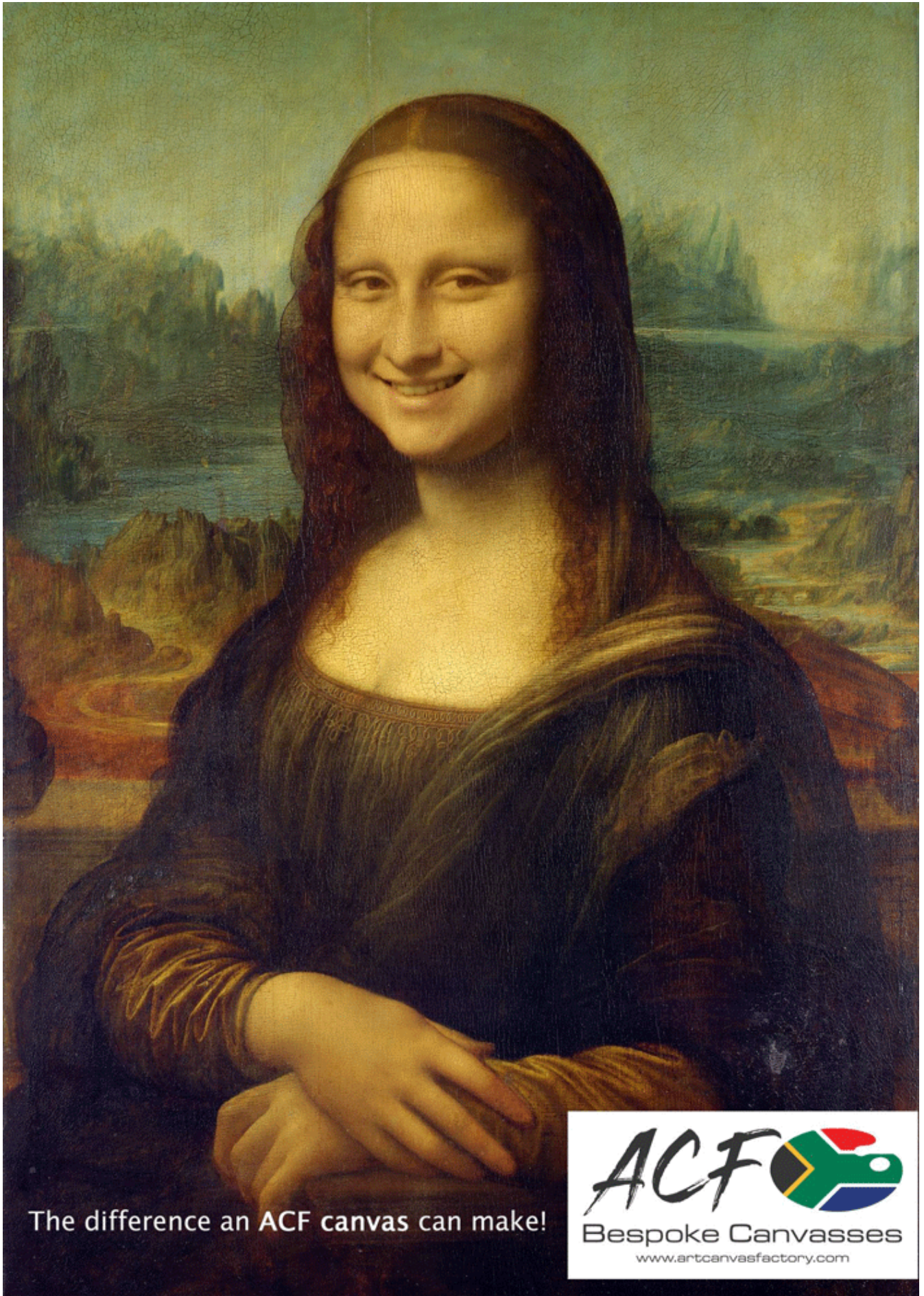
Also a 5% discount from Art Sauce in town.

Winsen's Canvases offer free delivery of their canvases from their factory in Johannesburg.

*You will need to present your 2024 Membership Card when claiming your discounts.*







The difference an ACF canvas can make!

**ACF**   
Bespoke Canvasses  
[www.artcanvasfactory.com](http://www.artcanvasfactory.com)



## ART CLASSES



If you would like your name added to this list, please email [secretary@sasa-artists.co.za](mailto:secretary@sasa-artists.co.za)

**KAREN BURNS FSASA** holds classes on Wednesday mornings at the Newlands Scout Hall specialising in still life working from life. You can contact her at [karenjl0704@gmail.com](mailto:karenjl0704@gmail.com)

**SONJA FRENZ FSASA** runs workshops from her studio in Durbanville. Contact her at [sonjafrenz@gmail.com](mailto:sonjafrenz@gmail.com) for more information

**LYN NORTHAM FSASA** holds her 'beginner and/or get back to it' oil classes at the Newlands Scout Hall on Thursday mornings. Contact her at [northamlyn@gmail.com](mailto:northamlyn@gmail.com)

**WYN ROSSOUW FSASA** offers morning classes in the Bergvliet area, specialising in drawing and oil painting. Beginner's welcome! Contact her at [wynrossouw@gmail.com](mailto:wynrossouw@gmail.com)

**PENNY STEYNOR FSASA** holds watercolour classes during the week from a studio in Pinelands. Contact her at [steynor@mweb.co.za](mailto:steynor@mweb.co.za)

**HELEN VAN STOLK FSASA** offers workshops (online and live-experiential) for artists exploring intuitive expressive creativity. For more information, please email [helenvstolk@gmail.com](mailto:helenvstolk@gmail.com) or visit [helenvanstolk.com/workshops---information.html](http://helenvanstolk.com/workshops---information.html)

**LAURA WENMAN MFSASA** teaches drawing and oil painting technique classes for beginners to advanced students from her studio in Parklands on Tuesday mornings and Friday afternoons. Contact her at [aurawenman@gmail.com](mailto:aurawenman@gmail.com)

**ELIZE BEZUIDENHOUT** holds regular portrait workshops in her studio in Durbanville. For more information and to find out times, contact Elize at [elize.artist@gmail.com](mailto:elize.artist@gmail.com)

**LINDA BRILLEMEN** offers Decorative Painting Brushstroke classes in Tableview. She is an Internationally Certified Decorative Painting Brushstrokes teacher. Contact her at [lbrilleman01@gmail.com](mailto:lbrilleman01@gmail.com)

**GLENDA CHAMBERS** offers both morning and evening classes and regular workshops in watercolour and oil in the Blaauwberg area. You can contact her at [gchambers@mweb.co.za](mailto:gchambers@mweb.co.za)

**LESLEY CHARNOCK** teaches oil painting workshops: portraits, still life, colour mixing and en plein air workshops in the winter months only (May to November). Contact her at [lesleycharnock@gmail.com](mailto:lesleycharnock@gmail.com) or on 082 424 1033

**PETER HYSLOP** offers art classes for children, tutoring for high-school pupils and courses for adults in drawing and painting (oils, acrylics and watercolours) at his studio, 50 Balfour Road, Park Estate, Rondebosch. He has 38 years of experience teaching art, having studied fine arts with Bill Ainslie at the Johannesburg Art Foundation, and fine arts and education at UCT. For more information contact him on 064 690 9059 or at [robertpeteroateshyslop@gmail.com](mailto:robertpeteroateshyslop@gmail.com)

**SALOMÉ KRUGER** offers drawing classes in Somerset West at the Helderberg Fine Art studios, Wednesday mornings from 09:00 to 12:00. For more information contact her on 072 591 2667 or at [smkruger@mweb.co.za](mailto:smkruger@mweb.co.za)

**MARCELLE LYONS** holds oil and watercolour classes, workshops and courses in the Girl Guide Hall, Alma Road, Rosebank on Monday mornings. Contact her at [marcelle.lyons@gmail.com](mailto:marcelle.lyons@gmail.com)

**JOANNE MCGILVRAY** holds sculpture classes in Kalk Bay for any hand built ceramic pieces, including sculptures, functional art and decorative clay work. 6-week modules, maximum 4 students per class. Contact her on 082 443 3116 or at [joanne.mcgilvray@gmail.com](mailto:joanne.mcgilvray@gmail.com)

**LYNNE MENGE** holds regular workshops and classes in acrylic in her studio in the Milnerton area. Contact her at [lynne@adrenalyn.co.za](mailto:lynne@adrenalyn.co.za)

**VICKI NORCLIFFE** offers portrait classes on Monday mornings with a model. Contact her at [vickinorcliffart@gmail.com](mailto:vickinorcliffart@gmail.com)

**LIZ PEARSON** offers basic oil painting classes every Monday and Tuesday morning in the Kenilworth area. Please contact her at [lizp@iafrica.com](mailto:lizp@iafrica.com)

**INGE SEMPLE** teaches semester courses in drawing and watercolour to a small intermediate class on Tuesday evenings; private art mentoring to all levels in drawing; watercolour and oils and workshops in situ from her Newlands studio, and online. Contact Inge at [ingesemple@gmail.com](mailto:ingesemple@gmail.com)



## ART CLASSES - CONTINUED

**IZAK VOLLGRAAFF** offers Tuesday evening art classes in the City Bowl and Saturday morning classes in Edgemead. Contact Izak at [izakart@gmail.com](mailto:izakart@gmail.com) or on 082 468 4794

**KIM WATERMEYER** (In The Zone) – light and airy studio in Plumstead. For fun, relaxed acrylic painting and mixed media lessons for beginners and intermediates. She also offers creative painting projects for those who want to join in. AM and PM classes. Contact her on 079 343 5953 or at [kimwatermeyer.co.za/in-the-zone-art-studio](http://kimwatermeyer.co.za/in-the-zone-art-studio)

**VAL WATT** holds monthly pastel workshops at her home studio in Pinelands – with different themes. Contact her on 081 010 8121 or at [valbrownwatt@gmail.com](mailto:valbrownwatt@gmail.com)

## FRAMERS



We have included a list of our members who offer framing services. If you would like your name added to this list, please email: [secretary@sasa-artists.co.za](mailto:secretary@sasa-artists.co.za)

**Artland Framing, Claremont** – Shop 4 Heritage House, 20 Dreyer Street, Claremont 083 265 7737 - From Concept to Conclusion. Wide range of framing options with personal service and professional workmanship. 2 underground bays dedicated to Artland customers (down the ramp alongside Knight Frank Properties at the front of the building on Dreyer Street) and loads of free underground on a Saturday (10:00 to 13:00)

**Coralie Bradburn, Blaauwberg** - Custom mountboard cutting. She has a computerised mount cutter, so all work is accurate and precise. Individual boards or bulk cuts, regular, v-groove, circular, oval and many more options. White and off-white boards always available: other colours can be ordered on request. 082 925 2416.

**H&F Framers** have been framing for 23 years and work from their home base at 12 Avenue Protea, Fresnaye in Upper Sea Point. They cater to a wide range of clients from corporates and galleries to individual artists and offer very competitive prices. Tel 021-439 5849 / 082 414 2268.

**Mountain View Framing & Design:** Shop 13, Platteklouf Shopping Centre. Bespoke framing of all artworks. Contact Pamela on 021 558 4863 or at [mvframing@outlook.com](mailto:mvframing@outlook.com) Website: [mountainviewframing-design.com](http://mountainviewframing-design.com)

**Village Framers.** 58 Belvedere Road, Claremont. 021 683 8996 or 084 585 4535; [info@villageframers.co.za](mailto:info@villageframers.co.za) [www.villageframers.co.za](http://www.villageframers.co.za)

**Winsen's Canvases.** Specialises in manufacturing custom-made artists' canvases and custom, hand-gilded frames, with the capability of re-stretching original artworks, including the stretching of canvas prints. Unit 3, Block C, Gallagher Corner, 23 Richard's Drive, Midrand. Free courier delivery nationwide. 011 315 0565; [www.winsens.co.za](http://www.winsens.co.za)

## ADVERTISING RATES

All money earned from advertising goes towards the SASA Outreach Programme.

To advertise in the newsletter or send out an email to the SASA database, the rates for *Art-related* events are:

**Newsletter:** Full page **R260** Half page **R160** Quarter page **R95**

**Email rates:** Business or non-members advertising service or goods for profit **R250**.  
Members advertising service or goods for profit **R200**.  
This also includes a post on the SASA Facebook page.

**Bookings Contact:** [secretary@sasa-artists.co.za](mailto:secretary@sasa-artists.co.za)

Please Like, Follow and Share the SASA Social Media Posts and Pages. Thank you.



<https://www.facebook.com/SASArtists>



<https://www.instagram.com/sasa.artists>

We are an affiliate member of the South African National Association for the Visual Arts (SANAVA)

